

晟荣国际

SR *SHENGRONG* INTERNATIONAL

Cross-border Cargo and Information Exchange Platform

www.gdsr.cc



CONTENT

Cross-border Cargo and Information Exchange Platform

01

SR International

- 3 major business overviews

02

International Logistics

- Shenzhen、Guangzhou、
Guangzhou Airport

03

Import & Export Trade

- Zhongshan、Zhuhai

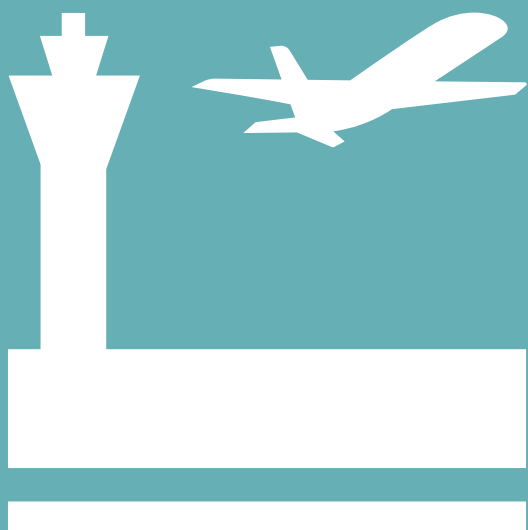
04

Cross-border E-commerce

- Zhuhai、Hong Kong



• Company Profile



After twenty years of hard work, SR International now has three major collaborative businesses, namely international logistics, import & export trade, and cross-border e-commerce.

The coordinated development of the three major businesses is our company's business advantage. We provide customers with one-stop global logistics solutions. Whether our customers are in the field of international trade or cross-border e-commerce, we can provide professional, efficient and reliable services to achieve win-win development.



• Company Profile

1. International Logistics

As the company's core business, we focus on providing efficient and reliable international logistics solutions to customers around the world. With many years of experience and expertise, we have established a good reputation in the field of international logistics. Whether it is sea transportation, air transportation, land transportation or multimodal transportation, we can provide customers with the best logistics solutions.

2. Import & Export Trade

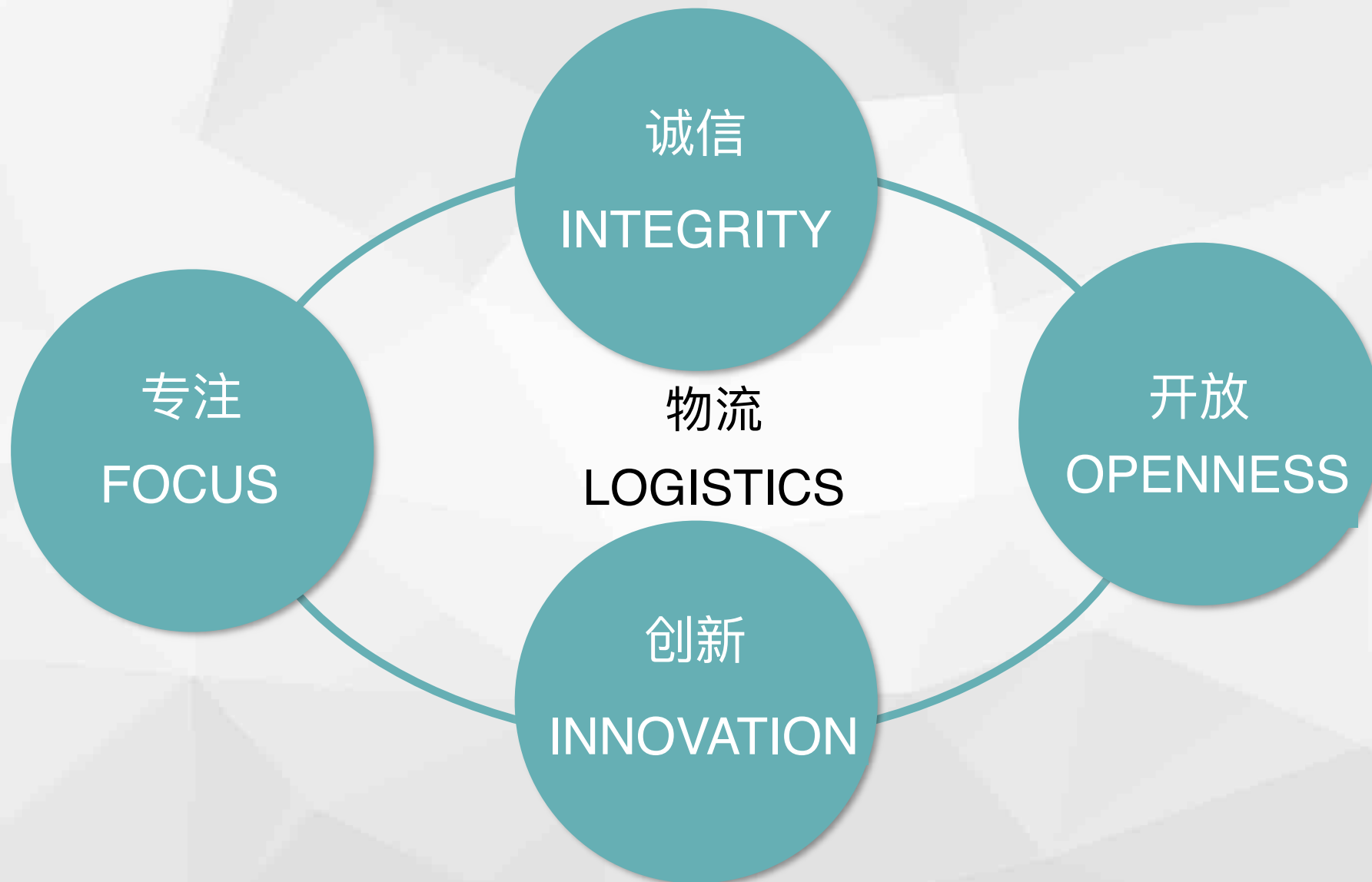
As an extension of international logistics business, we provide import and export trade services. We understand the complexities and challenges of global trade. From goods procurement and export procedures to import declaration and clearance, we assist customers to solve various problems in cross-border trade and achieve smooth transactions. In addition, we also provide purchasing and sales agency services for global commodities.

3. Cross-border E-commerce

With the rise of e-commerce, we actively develop cross-border e-commerce business. Provide customized logistics solutions, including warehousing, distribution, customs clearance and other services, helping companies expand the global market. Providing global cargo warehousing and dropshipping services to make business more convenient and efficient. At the same time, we search for global products, match them with suitable e-commerce platforms, and provide cross-border platform sales and services of products;

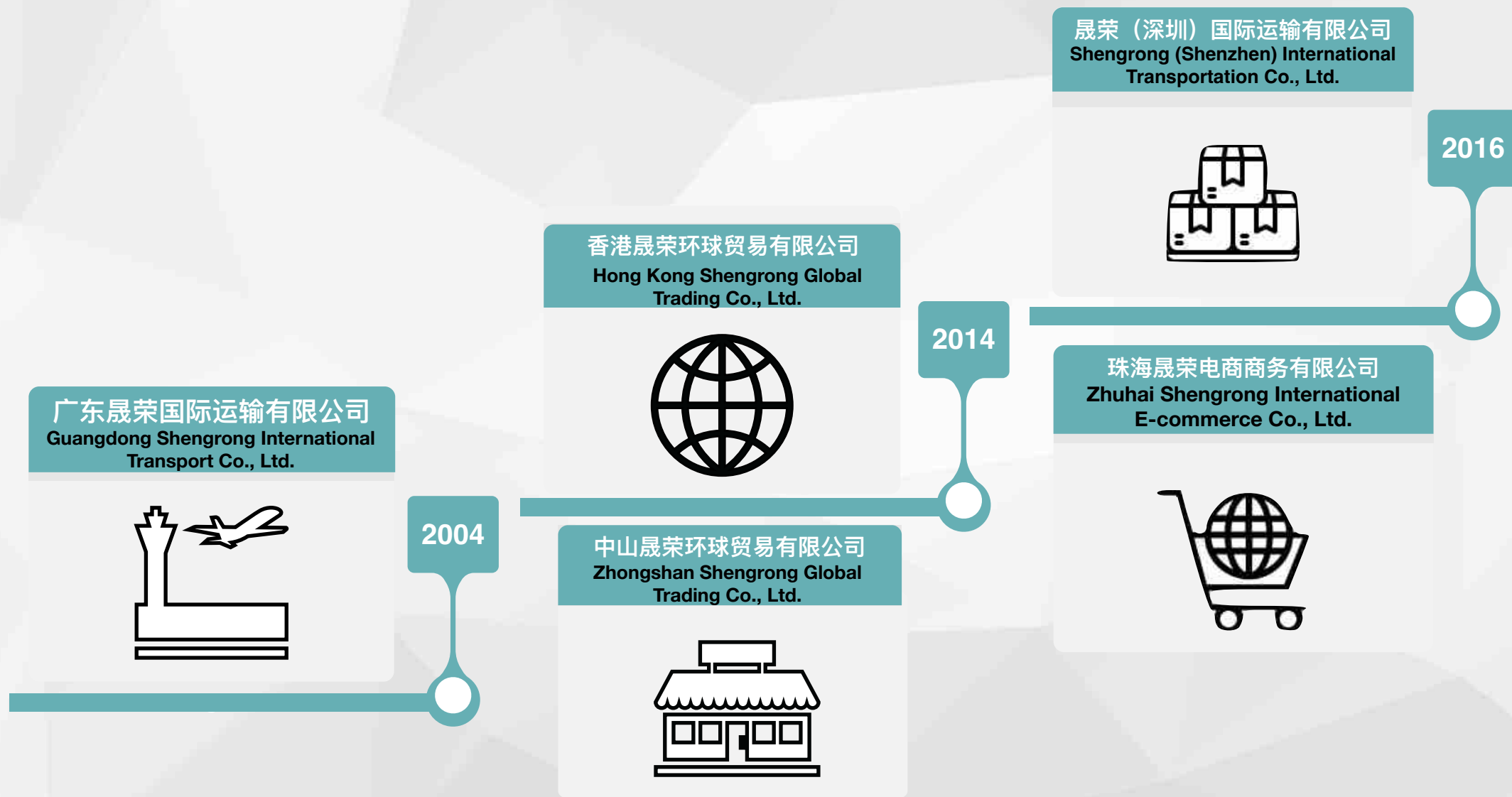


• Company Culture



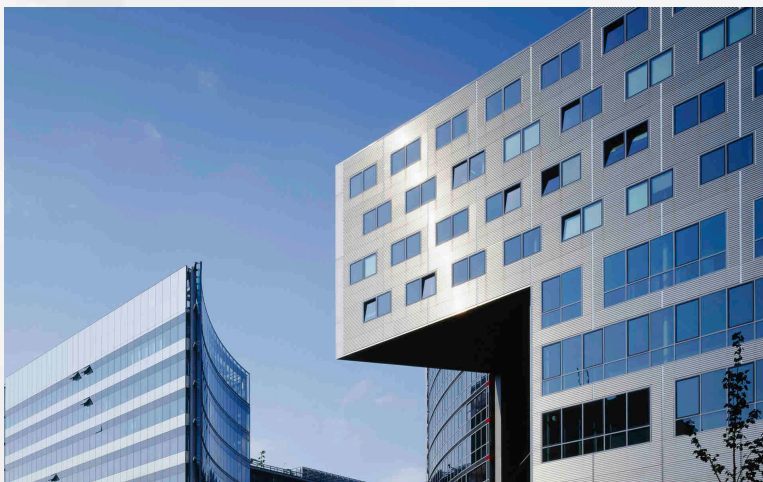


• Development Path





• Office Address



Shenzhen Office: 7M, Star Navigation Center, No. 2, Xinghua Road, Fuyong Street, Baoan District, Shenzhen

Guangzhou Office: Shop 101-104, North Tower, Jisheng Building, No. 178 Hangyunnan Street, Airport Road, Baiyun District, Guangzhou

Guangzhou Airport Office: Room 122, Express Center, Bonded Central Area, Guangzhou Airport Customs Supervision Area

Zhuhai Office: Room 909, Building 1, No. 313 Renmin East Road, Xiangzhou District, Zhuhai City

Zhongshan Office: Room 811, Jinyi Building, Zhangjiabian, Torch Development Zone, Zhongshan City

HONG KONG Office: FLAT 7 BLK B 23/F HOOVER INDUSTRIAL BUILDING NO 26~38, KWAI CHEONG ROAD, HONG KONG



PART 02

International Logistics



• Business Overview



No.	Type	Import / Export	Start	End	Office	Remarks
1	Import Customs Clearance	Import	Global	Guangzhou	Guangzhou Airport Office	1. Type: E-commerce Parcels (B2C)、Personal Items (C2C) 、Commercial Express (B2B), General Trade; 2. Industry qualification: International Express Business License (China Post 20130457C);
2	DHL、UPS、FedEx Agent	Export	Guangzhou/Shenzhen	Global	Shenzhen Office	Agent of DHL, UPS, and FedEx for global express delivery;
3	Saudi Arabia customs clearance delivery	Export	Guangzhou/Shenzhen	Saudi Arabia	Shenzhen Office	Customs clearance, delivery and cash on delivery services for small and large packages in Saudi Arabia
4	Air freight	Export	Shenzhen/Hong Kong	Global	Shenzhen Office	Popular airports in Japan, South Korea, Southeast Asia, the United States, and Europe
5	Transit truck	Export	Guangzhou/Shenzhen	Hong Kong	Shenzhen Office	Transit business from Guangzhou/Shenzhen to Hong Kong;
6	Japan & South Korea line	Export	Guangzhou/Shenzhen	Japan / South Korea	Shenzhen & Guangzhou Offices	1. Japan and South Korea express air export port-to-port line; 2. Guangzhou—>Shenzhen—>Hong Kong—>Japan/South Korea;
7	Export customs declaration of e-commerce items	Export	Shenzhen	Global	Shenzhen Office	/



• International Express



20 years of international express delivery experience, providing cross-border/regional high-quality international express services to Chinese export companies and peer customers.

SERVICE

- Advanced logistics management system software ensures efficient transportation processes;
- Efficient warehousing services ensure the safe and proper storage of goods;
- Experienced team tailor satisfactory logistics solutions;

BESIDES

SCOPE

- 220 countries around the world, reach destination quickly and conveniently;
- Departing from the Shenzhen Airport warehouse and transferring in Hong Kong, fast transportation is ensured through DHL, UPS, FEDEX, etc.;

- Global cargo warehousing and services help to expand business more conveniently and comprehensively;
- 10-year global DHL VIP account and priority channel to ensure safe and timely goods delivery;
- Diversified routes such as dedicated lines in Europe, the United States, Southeast Asia, and the Middle East to meet the logistics needs of different regions;



• Customs Clearance Business



广州白云机场
Guangzhou Baiyun Airport



广州莲花山码头
Guangzhou Lianhuashan Pier



深圳前海保税区
Shenzhen Qianhai Free Trade Zone

2023 DATA

Category	Airport Import	Lianhuashan Import	Shenzhen Export	Total
QTY (K)	170	348	30,143	30661
Weigh (tons)	769	956	12,824	14549
Amount (RMB M)	77	103	585	765



• Important Qualification



副本: No. 001

 快递业务经营许可证 许可证编号: 国邮20130457C 发证日期: 2023 年 07 月 16 日 有效期至: 2028 年 07 月 15 日  发证机关:  2023 年 7 月 12 日	<table><tr><td>企业名称</td><td>广东晟荣国际运输有限公司</td></tr><tr><td>注册地址</td><td>广东省广州市白云区机场路航云南街38(自编178号)北楼101-104房</td></tr><tr><td>法定代表人</td><td>赵日彬</td></tr><tr><td>注册资本</td><td>500万元人民币</td></tr><tr><td>企业类型</td><td>有限责任公司</td></tr><tr><td>股权关系</td><td><table><tr><td>股东</td><td>出资比例</td></tr><tr><td>赵日彬</td><td>80.000%</td></tr><tr><td>赵志勇</td><td>20.000%</td></tr></table></td></tr><tr><td>业务范围</td><td>代理国际快递(邮政企业专营业务除外)</td></tr><tr><td>地域范围</td><td>广州 通关城市: 广州市</td></tr></table>	企业名称	广东晟荣国际运输有限公司	注册地址	广东省广州市白云区机场路航云南街38(自编178号)北楼101-104房	法定代表人	赵日彬	注册资本	500万元人民币	企业类型	有限责任公司	股权关系	<table><tr><td>股东</td><td>出资比例</td></tr><tr><td>赵日彬</td><td>80.000%</td></tr><tr><td>赵志勇</td><td>20.000%</td></tr></table>	股东	出资比例	赵日彬	80.000%	赵志勇	20.000%	业务范围	代理国际快递(邮政企业专营业务除外)	地域范围	广州 通关城市: 广州市
企业名称	广东晟荣国际运输有限公司																						
注册地址	广东省广州市白云区机场路航云南街38(自编178号)北楼101-104房																						
法定代表人	赵日彬																						
注册资本	500万元人民币																						
企业类型	有限责任公司																						
股权关系	<table><tr><td>股东</td><td>出资比例</td></tr><tr><td>赵日彬</td><td>80.000%</td></tr><tr><td>赵志勇</td><td>20.000%</td></tr></table>	股东	出资比例	赵日彬	80.000%	赵志勇	20.000%																
股东	出资比例																						
赵日彬	80.000%																						
赵志勇	20.000%																						
业务范围	代理国际快递(邮政企业专营业务除外)																						
地域范围	广州 通关城市: 广州市																						

国家邮政局印制

<International Express License> involves SR's customs declaration business, which is the most important business of SR, specifically including customs declaration business of Guangzhou Baiyun Airport (Import), Guangzhou Lianhuashan Pier (Import), Shenzhen Qianhai Free Trade Zone (Export)

We specialize in customs clearance for e-commerce parcels, personal items, and commercial express shipments entering China. These types of goods require specialized handling and clearance services, which many customs brokers in China—about 95%—are unable to process due to the specific qualifications and location needed.



• Partners



中国外运长航
SINOTRANS&CSC



eUSU: Logistics





• Warehouse



NO.	Warehouse	Area (m ²)	Address	Business
1	GZW1	90	Guangzhou Baiyun Airport Comprehensive Bonded Zone (Central Zone)-Comprehensive Business Building	Airport Customs Supervision Warehouse (Import and Export)
2	GZW2	200	Opposite to Huadong Town Central Hospital, Huadu District People's Hospital Medical Group, Guangzhou	Domestic delivery after airport customs clearance, shipping warehouse
3	GZW3 (including cold storage)	211	Shop 101-104, North Block, Jisheng Building, No. 178, Hangyun Street, Airport Road, Baiyun District, Guangzhou	International dedicated line, kimchi business
4	SZW1	1000	Room 201, Building C, Fuxingda Logistics Park, No. 107, South Xinghua Road, Bao'an District, Shenzhen	International dedicated line, China-Hong Kong truck business
5	SZW2	3000	South of the 1st floor, Building 20, Kejutong Industrial Zone, No. 1 Tongfu Road, Fuhai Street, Bao'an District, Shenzhen	Global Express



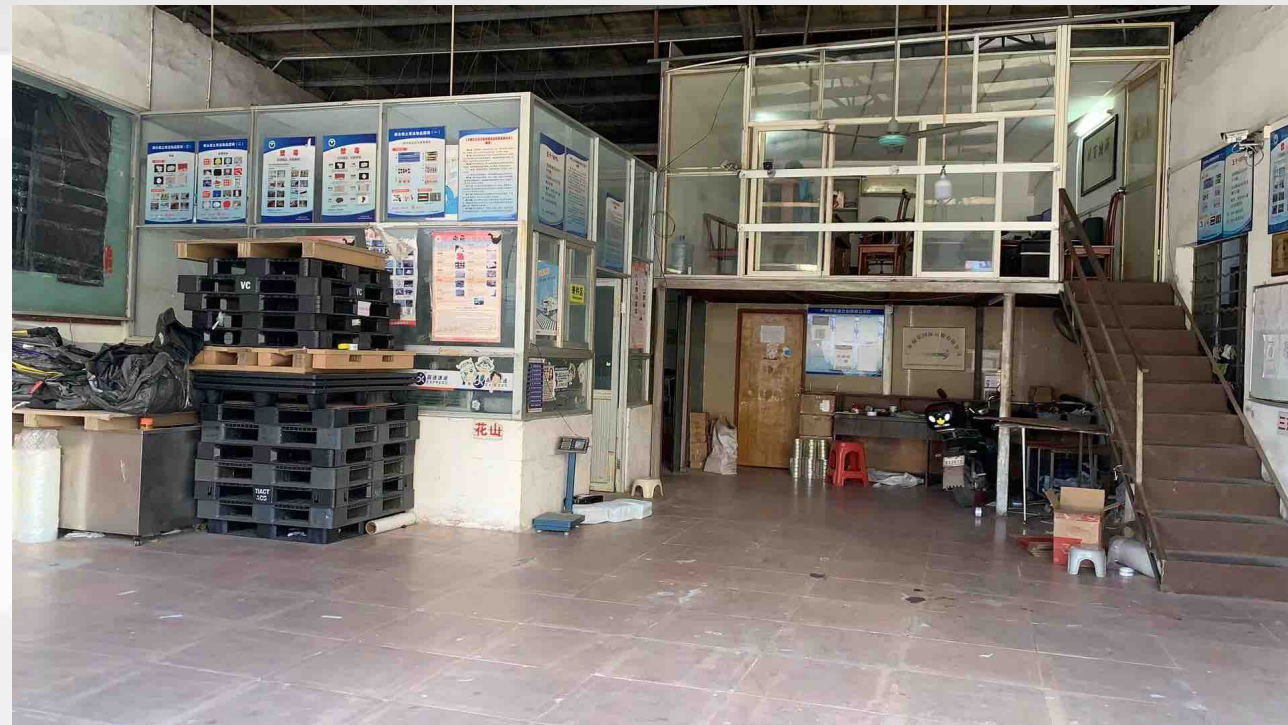
• Warehouse



GZW1
Area: 90m² (45m²import+45m²export)
Business: Airport Customs Supervision Warehouse
Address: Guangzhou Baiyun Airport Comprehensive Bonded Zone (Central Zone)-Comprehensive Business Building



• Warehouse



GZW2

Area: 200m²

Business: Domestic delivery after airport customs clearance, shipping warehouse

Address: Opposite to Huadong Town Central Hospital, Huadu District People's Hospital Medical Group, Guangzhou



• Warehouse



GZW3 (including cold storage)

Area: 211m²

Business: International dedicated line, kimchi business

Area: Shop 101-104, North Block, Jisheng Building, No. 178, Hangyun Street, Airport Road, Baiyun District, Guangzhou



• Warehouse



SZW1

Area: 1000m²

Business: International dedicated line, China-Hong Kong truck business

Address: Room 201, Building C, Fuxingda Logistics Park, No. 107, South Xinghua Road, Bao'an District, Shenzhen



• Warehouse

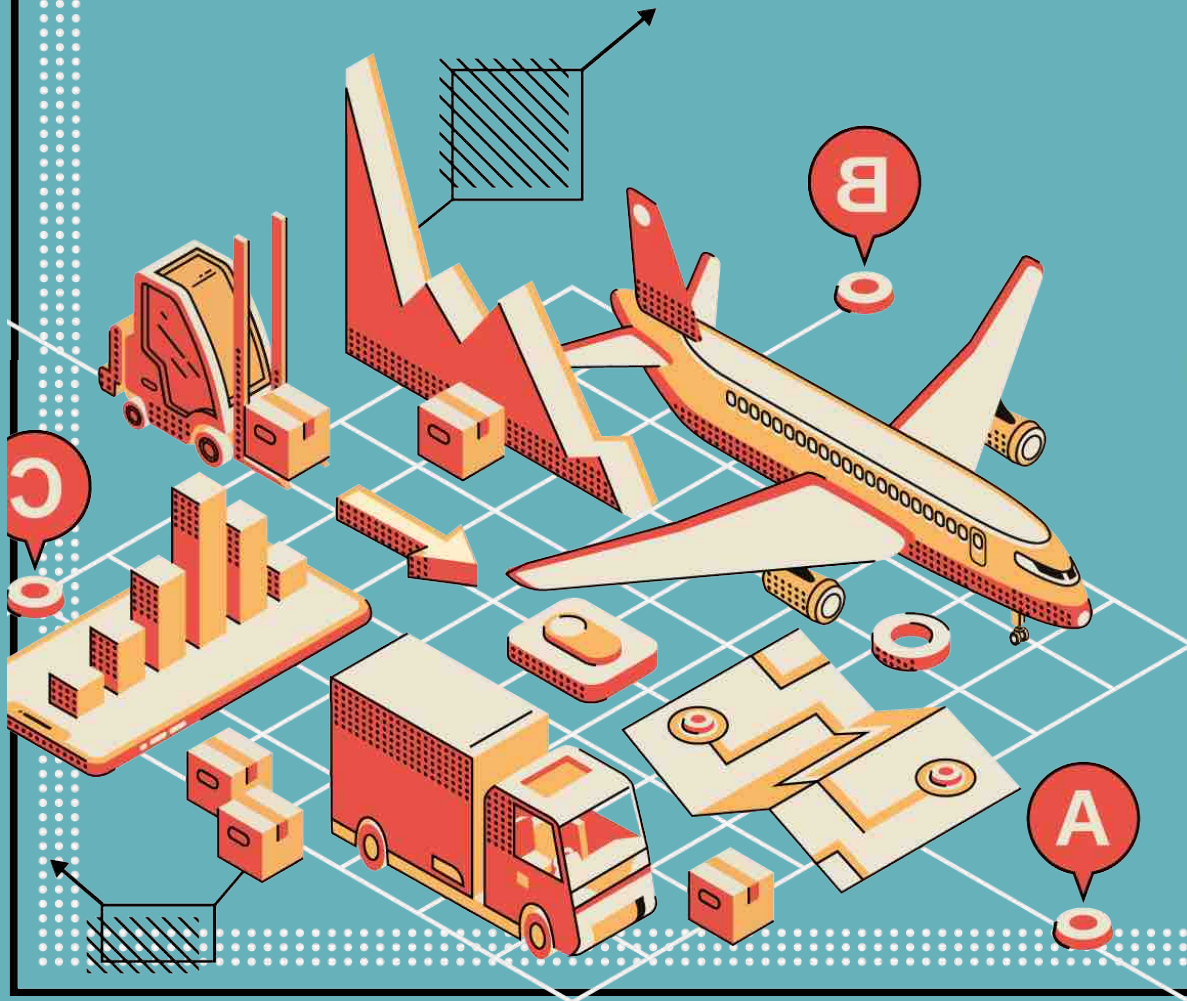


SZW2

Area: 3000m²

Business: Global Express

Address: South of the 1st floor, Building 20, Kejutong Industrial Zone, No. 1 Tongfu Road, Fuhai Street, Bao'an District, Shenzhen

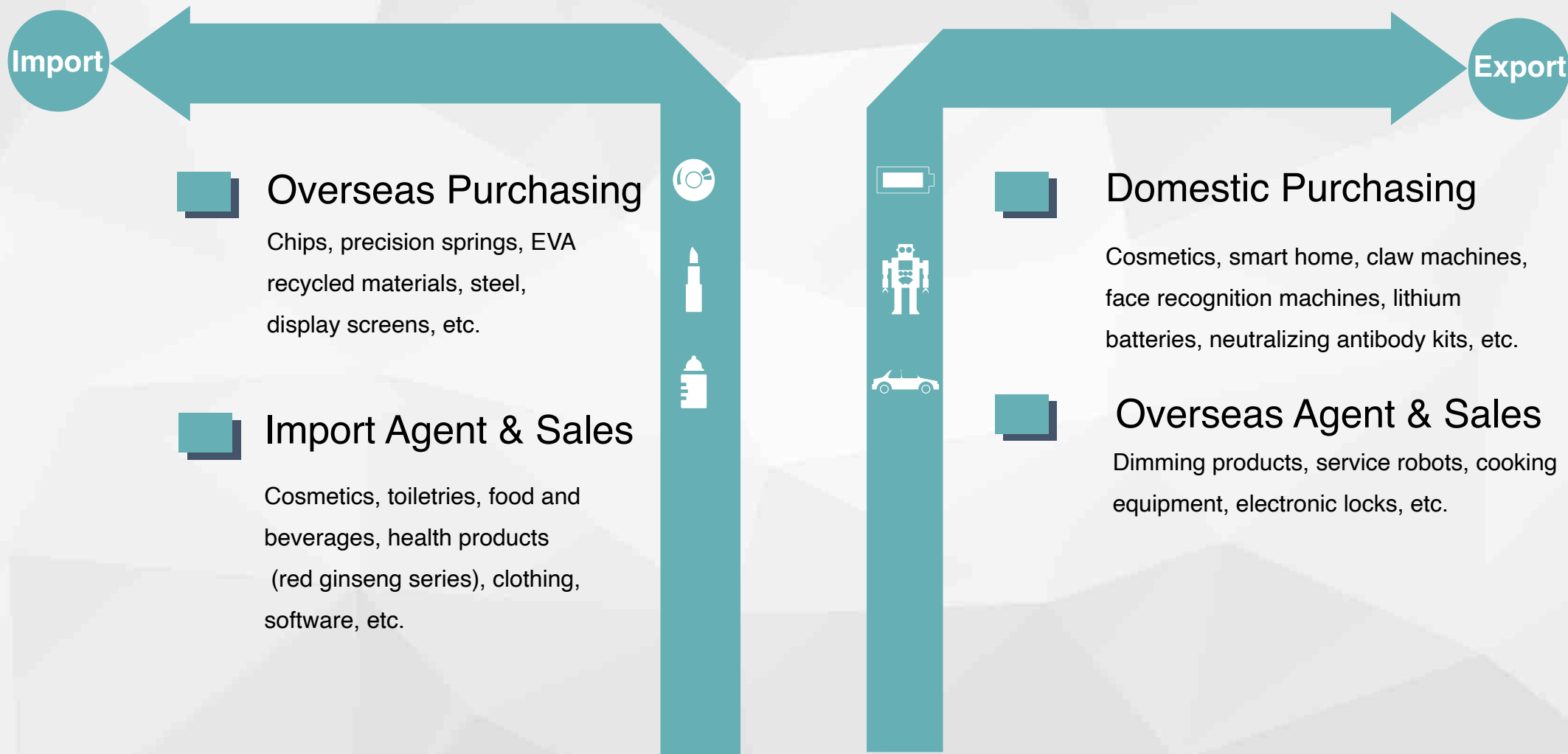


PART 03

Import & Export
Trade



• Import & Export Trade





• Import Process

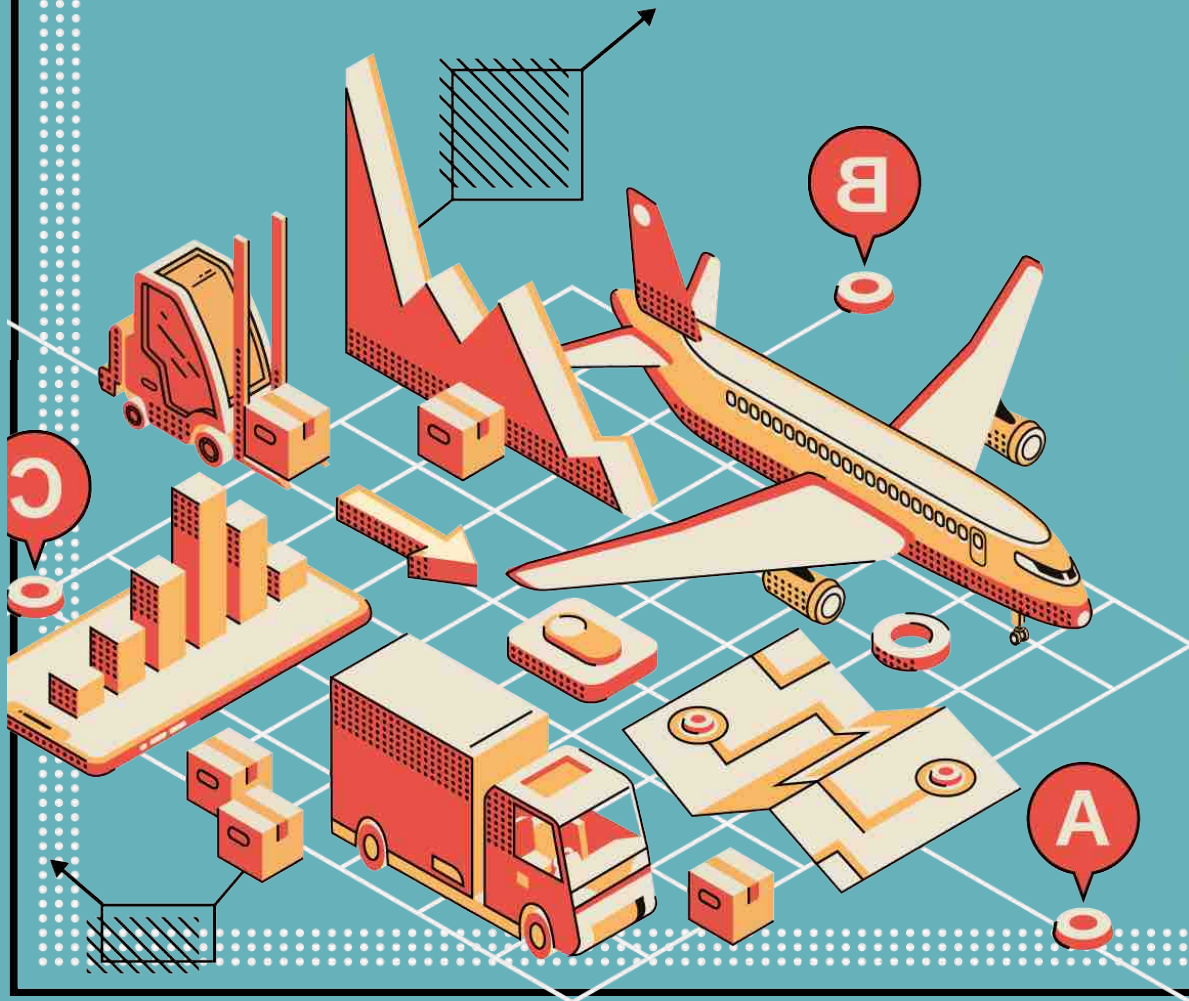




• Import Agent



Category	Overseas enterprise registration	Overseas exporter registration	Product testing	Label review	Product registration in China	Declaration	Inspection and Quarantine Certificate
Prepackaged food, red wine, red ginseng	✓	✓	product testing	food labels review	✓	✓	✓
Cosmetic	✓	✓	Product registration filing	Product label review	✓	✓	✓
1. Clothing, shoes, hats, knitted textiles; 2. Luggage, packaging materials, daily necessities; 3. Daily necessities and office supplies;	/	/	Detect according to instructions	Chinese label	/	✓	✓
electronic product	/	/	Apply for 3C certification	Chinese label	/	✓	✓
Toy	/	1. Mechanical physical safety project; 2. Chemical safety project; 3. Mandatory product certification projects;		Chinese label	/	✓	✓



PART 04

Cross-border
E-commerce



• Cross-border E-commerce



E-Commerce Operation Services

Operate platform stores, recruit overseas customer and provide e-commerce logistics services.

E-Commerce Listing Services

Provide product listing services on more than 60 overseas platforms

E-Commerce Products Selection

According to the requirements of overseas platforms, provide product proposals for direct procurement by the platforms

E-Commerce Sales

Agent & purchase products, promote sales on overseas platforms



• Overseas Platforms



晟荣国际

Thank You

Cross-border cargo and information
exchange platform

www.gdsr.cc

